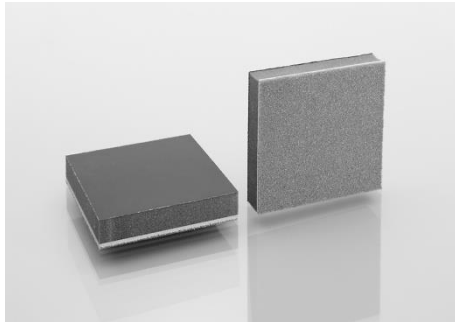


INSULATION/ABSORPTION

TRAMICELL 7.25 – combination layer



TRAMICELL	Thickness	Weight
7.25 PU B	25 mm	7 kg/m ²
PU = PU cover layer B = black		

Product description Tramicell 7.25 is a 3mm polyester foam base with a heavy flexible PVC mat combined with ABSORBEL sound-absorbing foam with black PU cover layer.

- Properties**
- High sound-insulating value
 - Flame-extinguishing in accordance with UTAC ST 18502
 - Also good sound absorption due to the combination with ABSORBEL, resulting in the sound level being reduced in the space where the material is applied
 - Easy to cut with a (Stanley) knife or to saw with a band saw
 - Coverlayer is resistant to water, oil, petrol, hydrocarbons, solvents et cetera
 - And prevents liquids and vapours from penetrating into the foam
 - Also resistant to ageing
 - Temperature-resistant from -30 to +90 ° C

Application

Automotive industry
 Ship and yacht building
 Mechanical engineering
 Housings

Processing

Bond on the thin side with TEROKAL 2444 contact adhesive (approx. 300 g/m²), or with BARYVIBRO 607 2-component adhesive (approx 1.0 kg/m²)
 We recommend ABSORBEL TAPE PU to mask off the seams between the mats

Dimensions

1400 x 1000 mm sheet
 Weight and thickness, see table above
 Customised punched components available

SOUND INSULATION CURVE

Insulation material : TRAMICELL
Surface : 1-mm steel sheet
Measured in accordance with : DIN 52210

